

Hoopoe Teaching-Stories™

The Farmer's Wife Paper Bag Puppet



With bag over hand, move the puppet's mouth.



Materials you will need: lunch-size paper bags, colored pencils, crayons, markers, glue, paste spreader, colored construction paper or cardstock, tape, scissors, stapler, newsprint for desks or tables. **Optional:** tissue paper, wrapping paper, old shopping bags, pipe cleaners, foil, beads, buttons, fabric scraps, yarn for hair, plastic eyes, etc.

1. With a piece of cardstock about the same size as the flap of the bag, draw, color or paint the top part of the farmer's wife's face (eyes, eyelashes, cheeks, and nose). Or glue on plastic eyes, colored paper, etc. After the drawing dries, cut out the face.

2. With a piece of heavy red art paper about 1.5 times larger than the flap of the bag, draw the outline of the top of the shawl, cut it out and decorate by drawing, painting, or attaching decals. Glue the face onto the top of the shawl near the bottom edge of the piece.

After the head/face dries, glue it to the flap of the bag, being careful not to glue the flap closed.

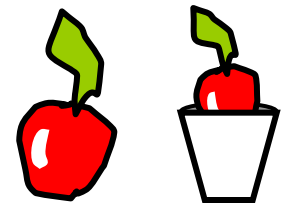
3. For the DRESS: Using black art paper, cut the dress and sleeves so that the dress part is about the same size as the bag. (You may want to cut out the sleeves separately and glue onto the dress.) Cut out the bottom part of the shawl from the same paper used for the head in Step 2 and decorate it in same fashion. Glue the bottom of the shawl onto the dress and add other decorations and trim to the dress, or add decals, glitter, fabric pieces, etc. Cut out hands and shoes then glue in place on the back side of the dress.

When the dress is dry, glue or staple the entire dress piece onto the front of the bag and under the flap. Make sure you don't glue or staple the bag shut. Add a red tongue under the bag's flap and on top of the dress.

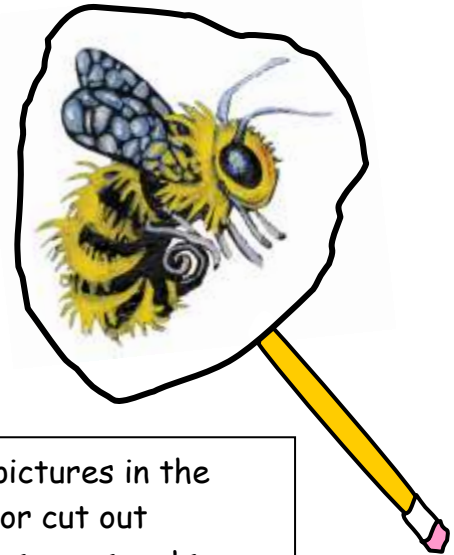
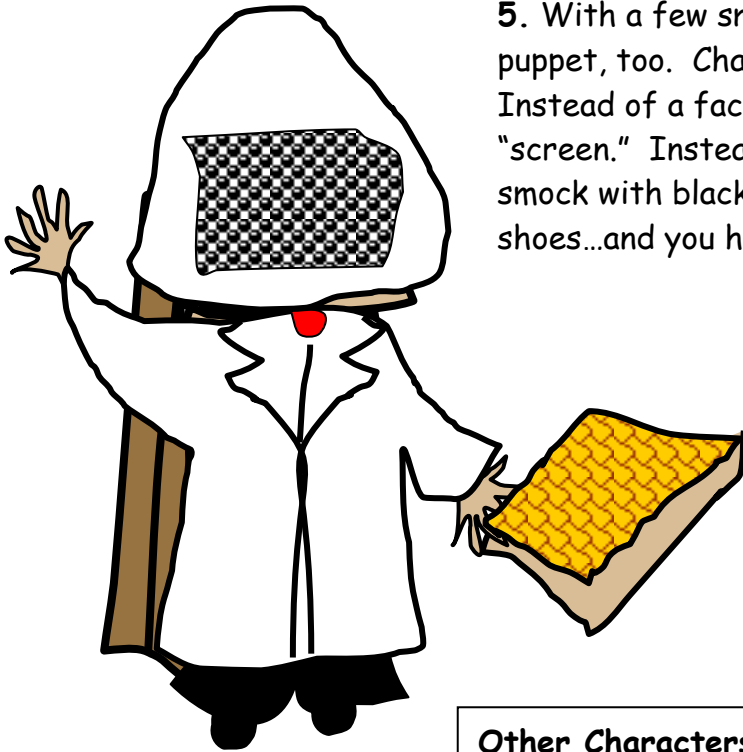
Allow the puppet to dry completely before use. You may have to apply extra glue or staples from time to time.



4. **Other Props:** Draw an apple and cut it out. Place this piece into a cup to represent the hole in the ground. Use paper clips or tape to attach the apple to the farmer's wife's hand after the apple is retrieved.



5. With a few small changes, you can make a BEEKEEPER puppet, too. Change the color of the headdress to white. Instead of a face, the beekeeper will have a rectangular "screen." Instead of a pretty decorated dress...a white smock with black pants attached under. Add a pair of black shoes...and you have a beekeeper!



Other Characters: Using the pictures in the story draw other characters - or cut out pictures from magazines of bees, cows, cats, dogs, ropes, wood fires, etc. Paste the pictures onto card-stock and cut them out. Glue the pieces on the top flap of paper bags.

Stick puppets: Instead of a bag, tape a pencil or stick to the back of the picture card.



Puppet Theater Ideas

- Place a tablecloth or sheet over a table and students sit under table and extend their puppets out from under the cloth to do their dialogues.
- Cut a rectangular window in a large cardboard box (such as an appliance box) on the front, and a "stage door" in the back. Have 1-2 students go inside box and perform their skits through the window.
- Place chairs facing each other and have students sit and perform their skits to each other. Have these puppets available in a drama center or storage bin for use whenever wanted.